



# Quick Start Guide for WISE-7xxx Series Module

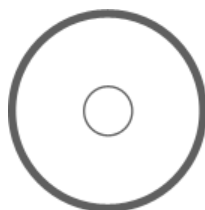
February 2010, Version 1.0

## Welcome!

Thank you for purchasing WISE-7xxx – one of the most cost-effective automation solutions for remote monitoring and control applications. This Quick Start Guide will provide you with minimum information to get started with WISE-7xxx. It is intended for use only as a quick reference. For more detailed information and procedures, please refer to the full user manual on the CD included in this package.

## What's In the Box?

In addition to this guide, the package includes the following items:



WISE-7xxx Series Module

Software Utility CD

Screw Driver

## Technical Support

- **WISE-70xx/WISE-71xx User Manual(ICP DAS WISE User Manual\_v1.0en\_7000.pdf)**  
CD : \WISE-70xx\_WISE-71xx\document\User Manual\  
[ftp://ftp.icpdas.com/pub/cd/wise\\_cd/WISE-70xx\\_WISE-71xx\document\User Manual/](ftp://ftp.icpdas.com/pub/cd/wise_cd/WISE-70xx_WISE-71xx\document\User Manual/)
- **WISE-780x/WISE-790x User Manual(ICP DAS WISE User Manual\_v1.0en\_7800.pdf)**  
CD : \WISE-780x\_WISE-790x\document\User Manual\  
[ftp://ftp.icpdas.com/pub/cd/wise\\_cd/WISE-780x\\_WISE-790x\document\User Manual/](ftp://ftp.icpdas.com/pub/cd/wise_cd/WISE-780x_WISE-790x\document\User Manual/)
- **WISE Website**  
<http://wise.icpdas.com/>
- **ICP DAS Website**  
<http://www.icpdas.com/>

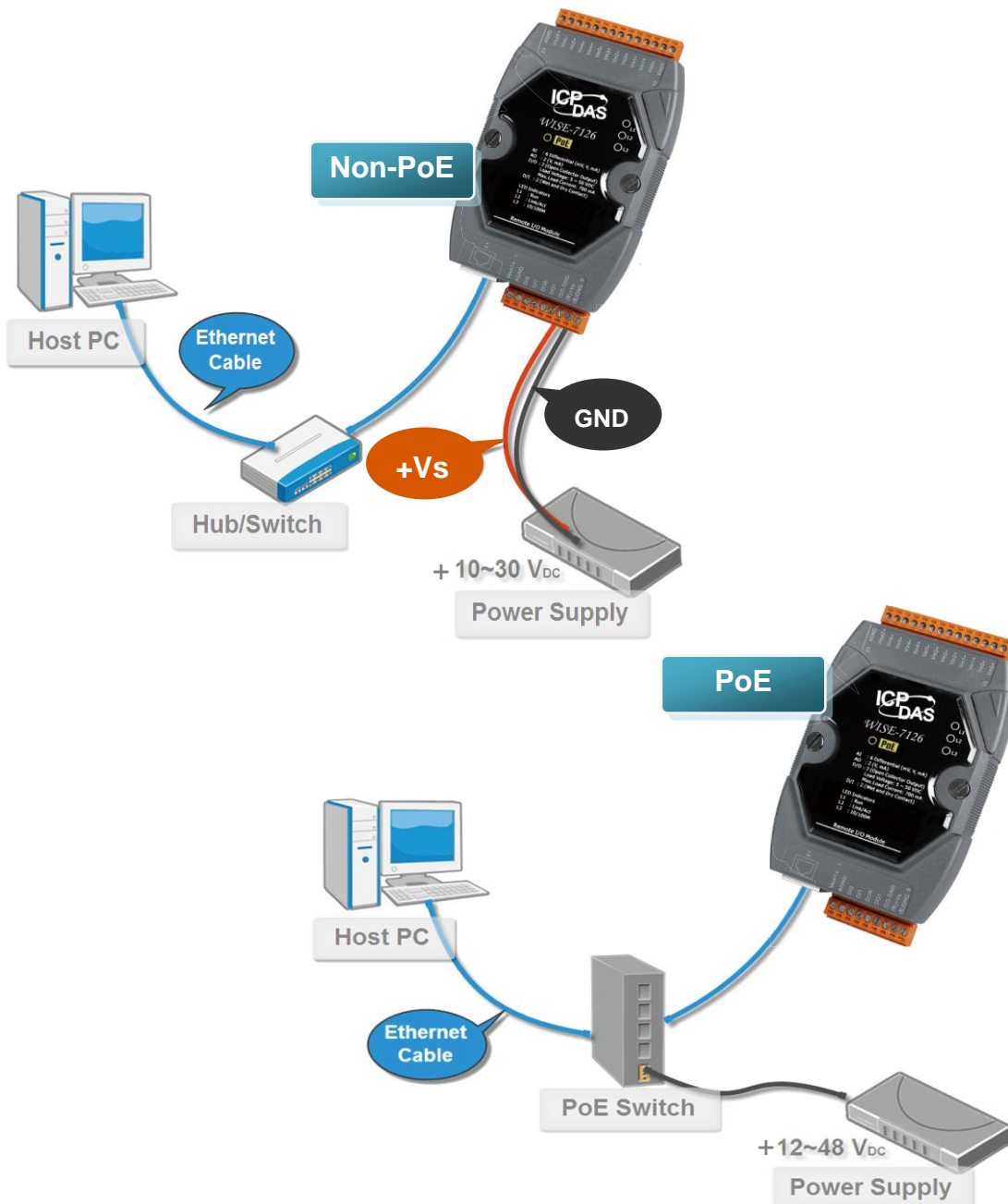


# 1 Configure Boot Mode

Make sure the switch is in the “Normal” position.

## 2 Connect to Network, PC and Power

Connect to Ethernet hub/switch and PC via the RJ-45 Ethernet port.



# 3 Install MiniOS7 Utility

## Step 1: Get the MiniOS7 Utility tool



The MiniSO7 Utility can be obtained from companion CD or our FTP site:

CD: \Tools\MiniOS7\_Utility\

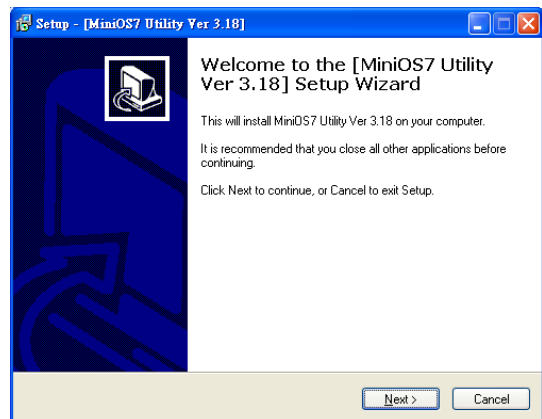
[ftp://ftp.icpdas.com/pub/cd/wise\\_cd/tools/minios7\\_utility/](ftp://ftp.icpdas.com/pub/cd/wise_cd/tools/minios7_utility/)

## Step 2: Follow the prompts to complete the installation



MiniOS7 Utility  
Ver 3.18

After the installation has been completed, a new short-cut for MiniOS7 Utility will appear on the desktop.



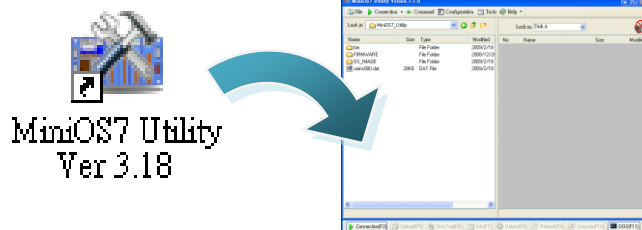
# 4 Assign a New IP by MiniOS7 Utility

WISE-7xxx comes with a default IP address; please assign a new IP address to the WISE module. The factory default IP settings are as follows:

Item	Default
IP Address	192.168.255.1
Subnet Mask	255.255.0.0
Gateway	192.168.0.1

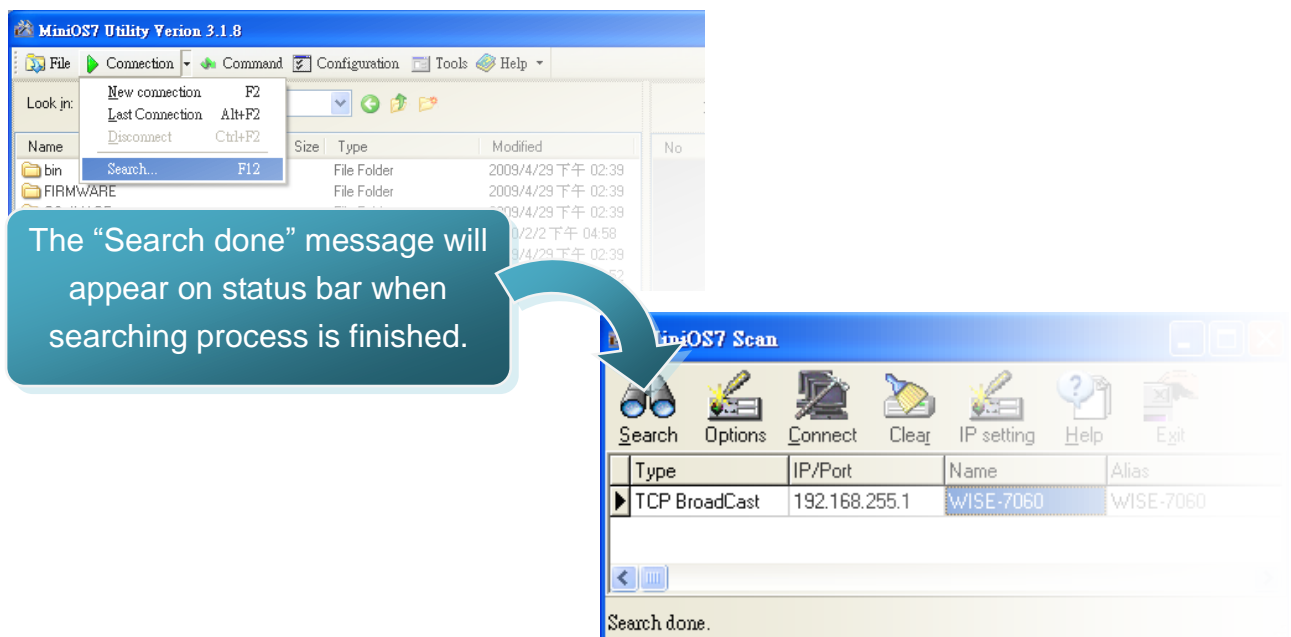
## Step 1: Run MiniOS7 Utility

Double-click the MiniOS7 Utility shortcut on your desktop.



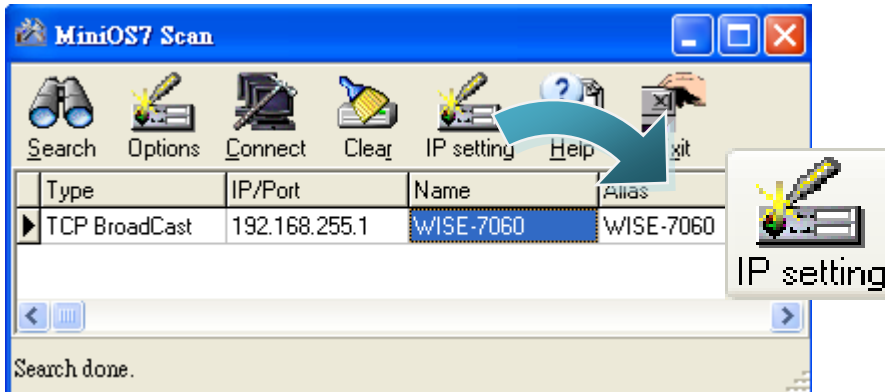
## Step 2: Press “F12” or click “Search” from the “Connection” menu

Press “F12” or click “Search” from the Connection menu, a MiniOS7 Scan dialog will appear and will display all the MiniOS7 modules that are currently connected to your network.

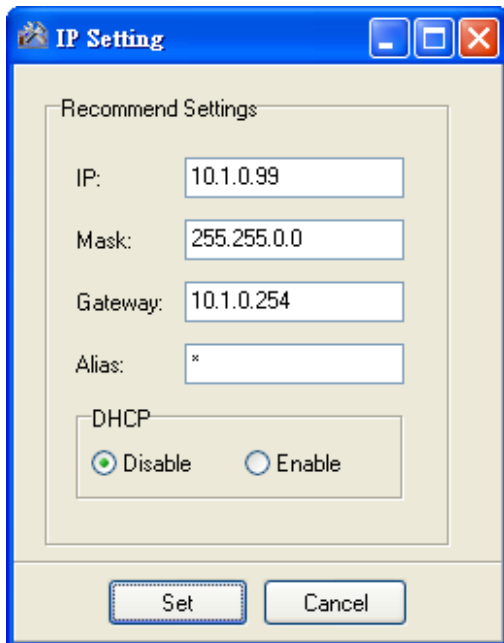


**Step 3: Select the module name and then click “IP setting” from the toolbar**

Select the module name from the list of the fields, and then click “IP setting” from the toolbar.

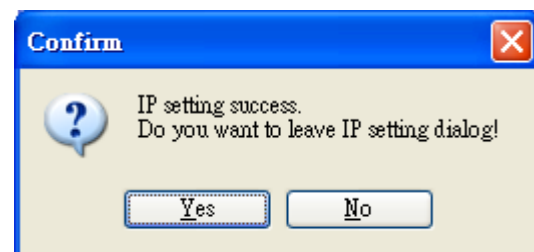


**Step 4: Assign a new IP address and then click “Set” button**



**Step 5: Click “Yes” button**

After completing the settings, click the “Yes” button to save and exit the procedure.



# 5 Go to WISE-7xxx Web Site to edit control logic.

Please follow the steps below to implement IF-THEN-ELSE control logic on controllers:

## Step 1: Open a browser

Open a browser (recommended internet browsers: Mozilla Firefox or Internet Explorer).

## Step 2: Type in the URL address of the WISE-7xxx

Make sure the IP address assigned is accurate (please refer to section 4: "Assign a New IP by MiniOS7 Utility). Type in the URL address of the WISE-7xxx module in the address bar.

## Step 3: Get on the WISE-7xxx web site

Get on the WISE-7xxx web site. Implement the control logic configuration in the order as indicated in the diagram.

The screenshot shows the WISE-7xxx web configuration interface. At the top, there are navigation buttons: '1. Basic Setting', '2. Advanced Setting', and '3. Rules Setting'. Below these are 'Channel Status', 'Download to PC', and 'Upload to Module'. A large blue number '4' is overlaid on the 'Upload to Module' button. The main content area includes a 'Welcome to ICP DAS WISE' message, a 'Web configuration page' title, and a 'Hardware Information' table. Below the table is a 'Configuration Procedure' section with a list of steps: 'Basic Setting', 'Advanced Setting', 'Rules Setting', and 'Upload to Module', each with a brief description and a right-pointing arrow.

Hardware Information	
WISE Engine Version	1.00
OS Version	2.02.10
Module Name	WISE-7028
DI channels	2
DO channels	2
AI channels	6
AO channels	2

Configuration Procedure	
Basic Setting	Set up Time, Ethernet, and Module type.
Advanced Setting	Configure channel attributes and additional features.
Rules Setting	Edit IF-THEN-ELSE logic rules.
Upload to Module	Upload the settings to the hardware device.

## Step 4: Edit Basic Settings

Modify the Ethernet setting of the WISE module, or select the analog input/output range in the Basic Setting page as needed.

**Ethernet Setting Page**

IP	192	.	168	.	100	.	249
Mask	255	.	255	.	255	.	0
Gateway	192	.	168	.	100	.	254

Save

**Module Setting Page**

Module: WISE-7026

**AO Voltage & Current Input**

AO0	0 V ~ 5 V	AO1	0 V ~ 5 V
-----	-----------	-----	-----------

**AI Voltage & Current Input**

AI0	-500 mV ~ 500 mV	AI1	-500 mV ~ 500 mV	AI2	-500 mV ~ 500 mV	AI3	-500 mV ~ 500 mV
AI4	-500 mV ~ 500 mV	AI5	-500 mV ~ 500 mV				

Save

## Step 5: Edit Advanced Settings

Edit Timer, channel attribute, internal register, and Email configuration settings in the Advanced Setting page as needed.

**Timer Setting Page**

Timer Amount	0
Index	
Period	0 Sec
Initial Status	Stop

Save

**DI Attribute Setting Page**

Module & Channel	WISE-7026	Channel	0
Filter	0	X 10ms	
Condition	None		
Initial Value	0		

Save

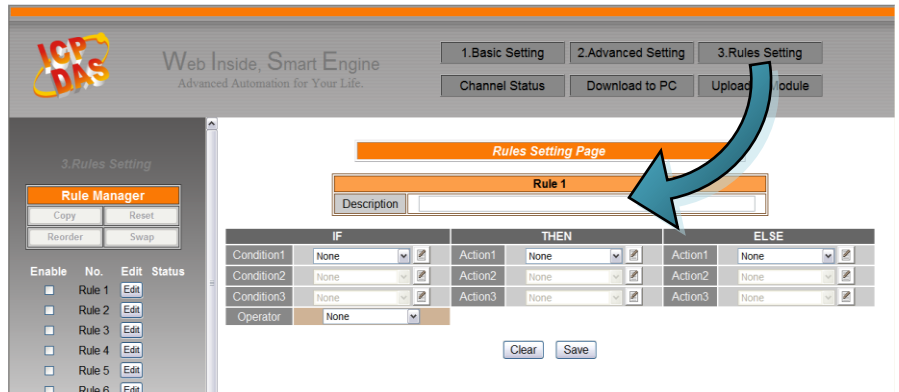
**Internal Register Setting Page**

No. 01	No. 02	No. 03	No. 04
No. 05	No. 06	No. 07	No. 08
No. 09	No. 10	No. 11	No. 12
No. 13	No. 14	No. 15	No. 16
No. 17	No. 18	No. 19	No. 20
No. 21	No. 22	No. 23	No. 24
No. 25	No. 26	No. 27	No. 28
No. 29	No. 30	No. 31	No. 32
No. 33	No. 34	No. 35	No. 36
No. 37	No. 38	No. 39	No. 40
No. 41	No. 42	No. 43	No. 44
No. 45	No. 46	No. 47	No. 48

Save

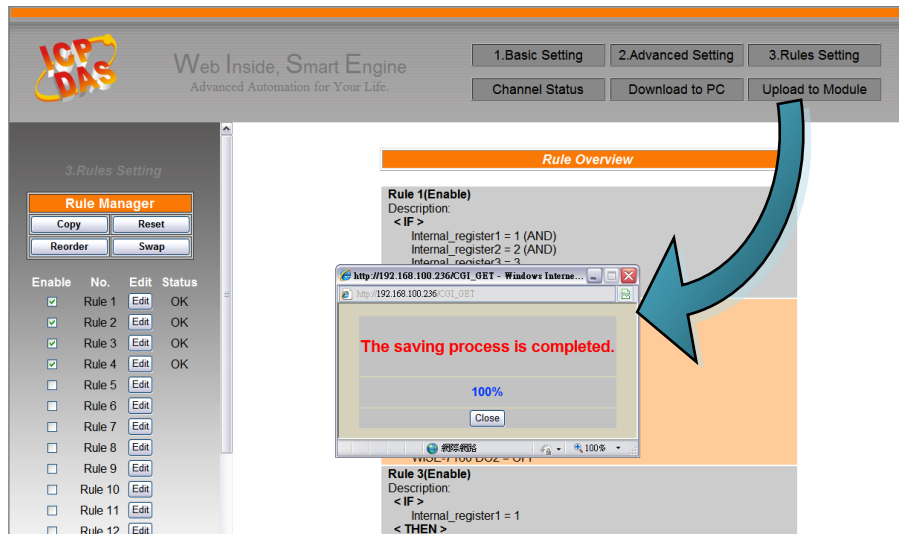
## Step 6: Edit Rule Settings

Edit your IF-THEN-ELSE rules in the Rules Setting page.



## Step 7: Upload to Module

After finishing rules setting, upload the rules to the WISE module. The WISE module will reboot and execute the rules automatically.



## Step 8: For more detail information, please refer to WISE User Manual